

The slide features a green background with a pattern of overlapping hexagons. A white rectangular area on the right side contains the title and subtitle. A dark grey rectangle is positioned at the top of this white area, and a thick green horizontal bar is at the bottom. The text is centered within the white area.

# Woodcock- Johnson

Tests of Achievement

# What is the Woodcock-Johnson III?

- Achievement Test
- Measures intellectual abilities and academic achievement

# Why should we use the WJIII?

- Documents performance:
  - Plan Individual Programs
  - Provide Guidance
  - Assess Growth
  - Program Evaluation
- It is not used to diagnose the existence of a learning disability or predict a student's school success.

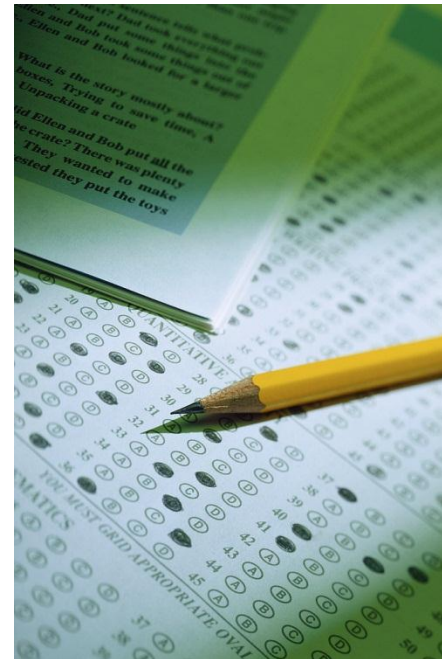
# Confidentiality of Materials

- Do not share test content with others
- Don't leave test materials unattended
- Do not inform subjects of the correct answers during or after the test

# Standardization

s

- Do not improvise-  
read the questions as  
they are written
- Score the responses,  
not what you think they  
meant
- Establish rapport



# Accommodations

- Timing: allow breaks if needed
- Instructions: May be repeated or signed as needed
- Scheduling: tests may be presented in any order and may be presented over several days

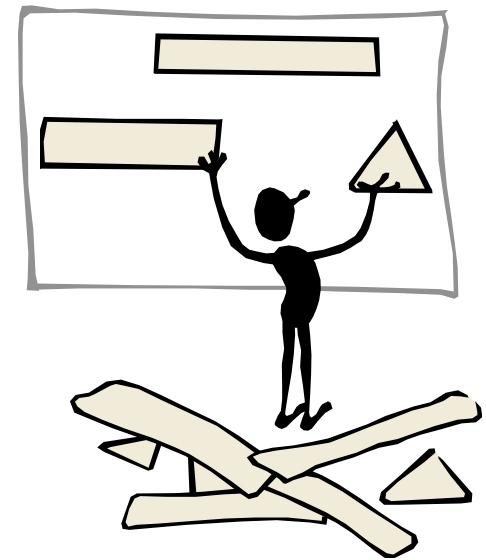
# Administration

- Order of tests
- Time
- Test behavior



# Basal and Ceiling Rules

- Basal - the lowest value correct
- Ceiling – highest value correct
- \*\* test modification





# For More Information

- <http://www.riversidepublishing.com/products/wjlllAchievement/details.html>